

# COUNSELOR INFORMATION

2014 -2015



FLORIDA STATE  
UNIVERSITY

*Hello future.*



## At a Glance

**Location:** Tallahassee, Florida; Leon County;  
(pop. 283,700)

**Founded:** 1851, the oldest continuous site of higher education in Florida

**Setting:** Urban, mid-size city in northwest Florida;  
sub-tropical climate

**Character:** Comprehensive, Research, Traditional,  
Residential, Public, Coeducational

**Calendar:** Two semesters and summer sessions

**Enrollment:** 41,477 total students  
(32,276 undergraduates) from every county in Florida, all 50 states, the District of Columbia, and over 140 countries

**Student Composition:** 55% female, 28% minority,  
5% international

## 2014 Accepted FTIC Profile

### Acceptance Rate

Summer: 46% | Fall: 44%

### Middle 50th Percent

Summer: 3.6-4.1 GPA, 24-28 ACT, 1690-1870 SAT  
Fall: 3.8-4.4 GPA, 27-30 ACT, 1780-1980 SAT  
Combined: 3.8-4.3 GPA, 26-30 ACT, 1760-1960 SAT  
Honors: 4.3-4.6 GPA, 30-33 ACT, 1970-2140 SAT

### Averages

Summer: 3.9 GPA, 26 ACT, 1781 SAT  
Fall: 4.1 GPA, 29 ACT, 1889 SAT  
Combined: 4.0 GPA, 28 ACT, 1864 SAT  
Honors: 4.4 GPA, 31 ACT, 2062 SAT

### Average Number of Academic Units

English – 4.5; Math – 5.5; Natural Science – 4.5;  
Social Science – 5; World Language – 3.5

### Freshman Retention Rate: 92%

Six-Year Graduation Rate: 77%

### Leading Florida Counties of Origin

Broward, Palm Beach, Miami-Dade, Hillsborough,  
Orange, Pinellas, Duval, Leon, Brevard, Seminole

### Leading States of Origin (after Florida)

Georgia, New York, New Jersey, Maryland, Virginia,  
Illinois, North Carolina, Pennsylvania, Texas, Ohio/  
Tennessee

### Leading High Schools of Origin

Cypress Bay, Coral Reef, St. Thomas Aquinas, H.B.  
Plant, Stoneman Douglas, Spanish River, Boca  
Raton, Miami Palmetto, Riverview, Winter Park,  
Alexander W. Dreyfoos, Suncoast, Stanton College  
Prep, Park Vista, Fort Myers, Lawton Chiles, Palm  
Harbor University, Pine View, Jupiter, Spruce Creek,  
Wellington, George Steinbrenner, Timber Creek, East  
Lake, Newsome

### Top Majors

Biological Science, Business, Engineering,  
Exercise Science, Psychology, Communication,  
Political Science, Education, Criminology,  
International Affairs

Most Popular Female Name: Emily

Most Popular Male Name: Michael

# Dear Friends,

It's been another busy year for Florida State University. The University has completed its five-year implementation of a new student information system, and we are in the final phases of completion for the Self-reported Student Academic Record (SSAR). More on the SSAR can be found below.

Florida State has emerged in a strong position, despite the recession and budget cuts. Among the most noteworthy achievements are: being named a Pre-eminent University; reaching our highest national ranking in the 15 years of the current ranking system (40 among publics) and establishing a clear path to the Top 25; being named the most efficient university by U.S. News and World Report for the last two years, one of the Best College Values (#4) by Princeton Review and USA Today, and Best Value University (#19) by Kiplinger's "Best Values in Public Colleges;" investing in a set of Big Ideas that are putting Florida State on the national map; and enrolling the brightest students in our school's history. And, of course, we have returned to national championship status in football, and our athletic programs are at the highest level in their history in the Directors'

Cup. Florida State is one of only six schools in the nation to finish in the top 15 in each of the last seven years.

Excellence in teaching is the foundation for student success; however, we can do much more than offer cutting-edge content delivered by top-notch faculty. We know that worthwhile experiences in and out of the classroom inspire and transform students. Extensive data now proves that students engaged in worthwhile experiences have higher grade point averages, are happier, and are more competitive in the job market.

Student success is the hallmark of a truly student-centered university, and it is our goal to become the most student-centered major research university in the country. To achieve this goal, we have:

- Supported a rich set of worthwhile experiences in and out of the classroom that inspire, engage, and transform the next generation of students;
- Developed a strong sense of community in order to promote academic success;
- Developed a system of rewards and recognitions that promotes student participation and engagement; and
- Promoted access through scholarship.

To each of our students, we make a promise and

commitment to help them realize their potential...to achieve almost anything.

Most of you know that this is my final year as Director of Admissions. I will be retiring in June. I will have been at Florida State for 44 years (I started out very young) as a student and employee. It has literally been my home for my entire work life which might explain why I am so passionate about this place. Aside from my staff and students, you are one of the reasons why I have enjoyed my job so much. Through budget cuts, long hours, and lots of paperwork, your dedication and commitment to helping students through the admissions process is simply amazing. We have laughed and cried together over our students but through it all, you have always been there for them and me, and I can't thank you enough.

Looking forward to working with you this final year. If you have any questions, please don't hesitate to call me on my direct line at **850.644.1328**, or email me at [jfinney@admin.fsu.edu](mailto:jfinney@admin.fsu.edu).



## COUNSELOR LISTSERV

[admissions.fsu.edu/counselors](http://admissions.fsu.edu/counselors)

We encourage you to join our email listserv so that you can receive all the latest news from us, including a mailed status report of your students after each notification date.

## COUNSELOR WEBSITE

[admissions.fsu.edu/freshman](http://admissions.fsu.edu/freshman)

Our freshman website includes a section for you. Topics covered include admissions, finances, scholarships, academics, and accepted students. We have also included a section on "Choosing a Major." It's filled with helpful information and websites that have exercises and activities, designed to help students identify a major that will meet their career goals. Check it out ... you may want to share it with your Resource Center.

You'll also note there is a section devoted to parents. You might want to suggest they read it, especially the Parent's Role found at [admissions.fsu.edu/freshman/parents/role.cfm](http://admissions.fsu.edu/freshman/parents/role.cfm).

## NOTIFICATION DATES FOR 2015

<i>Application and All Supporting Documents Received By:</i>	<i>Decision Available Online:</i>
October 15, 2014	December 17, 2014
January 14, 2015	March 18, 2015

The deadline for submitting the online application, application fee (or fee waiver), Self-reported Student Academic Record (SSAR), and test scores for the summer/fall freshman class is January 14. The University typically does not accept freshman applications for the spring semester. **Around deadlines, students should allow up to 10 working days for all supporting credentials to be posted to their OSC accounts.**

## ONLINE STATUS CHECK (OSC)

[admissions.fsu.edu/StatusCheck](http://admissions.fsu.edu/StatusCheck)

The OSC tool is designed for students to monitor the progress of their admission applications 24/7 – from the time of application to enrollment. They simply log in using their email address and the password they created at the time of application. Once accepted, students can return to the OSC to pay the admission deposit, register for orientation, and view when final high school and college transcripts are received in our office.

## 2015 FSU ADMISSION STANDARDS

[admissions.fsu.edu/freshman/admissions/requirements.cfm](http://admissions.fsu.edu/freshman/admissions/requirements.cfm)

The most important factor in the decision-making process remains the applicant's academic profile (grades earned) in combination with test performance on the ACT (plus writing) and/or SAT. The admission process will continue to assess applicants on the strength of the academic curriculum with greater consideration given to those performing well in advanced coursework.

All applicants will be evaluated using a GPA/ACT plus writing/SAT matrix that ranges from 3.3/26/1730 to 3.8/24/1650 and incorporates a list of positive and negative attributes. **If an applicant is deferred in our December notification, we will expect to see mid-year grades and additional test scores prior to making a final decision in March.**

We encourage all students to take both the ACT (plus writing) and SAT. Students with solid academics, but with ACT/SAT subscores below our minimums (listed below), will automatically be deferred or denied until new test scores have been received.

**Note:** Letters of recommendation are not required and will not be used in the regular decision-making process.

## Announcing

### A NEW REQUIREMENT FOR 2015 FRESHMAN APPLICANTS

Self-reported Student Academic Record (SSAR)

Think of SSAR as an abbreviated form of your high school transcript created by you. It replaces the official high school and college transcripts used by the Office of Admissions during the initial review process. At the SSAR website, you will be asked to list all of the classes and grades earned or in progress in the 5 academic disciplines (English, Mathematics, Natural Science, Social Science/History, and World Language). There is also an "Other" category for you to enter all other AICE, AP, IB, and dual enrollment classes and their corresponding grades that are not associated with the 5 academic disciplines. For instance, AP Music Theory, IB Theory of Knowledge, and HUM 2210 (a humanities class) would fall under this category.

The easiest way to create your SSAR is from a copy of your high school transcript. When you go to the SSAR website you can refer to the transcript to accurately reflect your classes and grades. Accuracy is important because all acceptances granted by the Office of Admissions will be validated, using your official high school and college transcripts sent to us after you have graduated. Acceptances granted using inaccurate SSAR data will be subject to revocation and, if discovered after classes begin, cancellation of registration.

## FREQUENTLY ASKED QUESTIONS

### What is the Self-reported Student Academic Record (SSAR)?

SSAR is a self-reported student academic record that lists the classes and associated grades that have been attempted, or will be attempted, for high school and/or college credit. It replaces the high school and college transcripts used by the Office of Admissions during the initial review process. Since accuracy is critical, you are advised to have a copy of your high school transcript available to use as a reference when you create your SSAR.

### Who is required to complete the SSAR?

All freshman applicants must complete a SSAR with the following exceptions:

1. Applicants who have already graduated from high school. Instead of the SSAR, graduated students must submit final official high school and dual enrollment transcripts when they apply.
2. GED graduates. Instead of the SSAR, GED graduates must submit their official GED results, along with the official partial high school transcript(s).
3. International and U.S. applicants who have not followed an educational curriculum patterned after the U.S. system. Applicants from non-U.S.-based systems must submit official or certified copies of all secondary school records and/or examination results. All academic records not in English must be accompanied by a certified English translation. In addition, these credentials must be evaluated by a credential evaluation agency. We recommend a member of the National Association of Credential Evaluation Services or the International Education Credential Services provided by the American Association of Collegiate Registrars and Admissions Officers.

### What if I am a CARE applicant?

CARE applicants must complete the SSAR and submit an official high school transcript.

### Where do I create my SSAR?

The SSAR is created at the Self-reported Student Academic Record website. Upon completion of the SSAR, you will be given a SSAR ID Number that must be provided to Florida State to allow us to retrieve your SSAR. You will be asked to provide the SSAR ID Number in Part II of the application for admission.

### When do I complete the SSAR?

The SSAR website becomes available at the same time the application for admission is turned on which is usually in August, prior to the start of your senior year. It is our recommendation that you complete the SSAR before submitting your application for admission. Just remember, your application for admission is incomplete and will not be reviewed until your application fee, SSAR, and test scores have been received.

### Do home-educated students complete the SSAR?

Yes, if they have not graduated and they have followed an educational curriculum patterned after the traditional U.S. system. If the curriculum followed cannot be represented on the SSAR, we ask that you contact the Office of Admissions at [admissions@admin.fsu.edu](mailto:admissions@admin.fsu.edu) for further instruction.

### What will happen if I do not complete the SSAR?

All freshman applicants (excluding the exceptions for students who have graduated or followed a non-traditional educational system) must complete the SSAR for admission consideration. A high school transcript submitted from the high school or through a third party vendor like Naviance or Parchment does not substitute for the SSAR requirement. If, for some reason, you are unable to complete the SSAR, you must contact the Office of Admissions at [admissions@admin.fsu.edu](mailto:admissions@admin.fsu.edu).

### Do I need to include high school courses taken while I was in middle school/junior high school?

Yes. Every academic course that you attempted for high school credit while in middle school/junior high school must be listed on the SSAR. The SSAR entry process allows you to state that the courses were taken while in middle school/junior high school.

### How do I enter my grades on the SSAR?

The SSAR collects grades on a semester basis. Please refer to the following examples to guide your grade submission:

1. **If your school only assigns semester grades**, you will enter your semester grades as shown on your high school transcript into the appropriate places in the SSAR.
2. **If your school only assigns a final grade for each class taken**, you will enter the final grade twice (first semester and second semester) for year-long classes (one credit), and once (either first semester or second semester) for semester-long classes (½ credit). For example, if you earned a grade of B in Algebra I which is a year-long class (1 credit), you will enter that grade twice (first semester and second semester). If you took Trigonometry which is a semester-long class (½ credit), you will enter that grade only once in whichever semester you took the class.
3. **If your school assigns both semester grades and a final grade**, only use the final grade when entering your grades in the SSAR. For example, if you took Algebra I and earned an A in the first semester and a B in the second semester and your final grade is B, you will enter a grade of B twice (first semester and second semester) in the SSAR.
4. **If your school assigns trimester grades and a final grade**, only use the final grade, the same principle as in #3. If the class is a year-long class you will use the final grade and enter it twice in the SSAR. If the class is only for one trimester, enter the final grade on either the first or second semester field.
5. **If you attend a school that is on block scheduling**, you are actually completing a year-long class (one credit) in one semester and a semester-long class (½ credit) in nine weeks. A one credit class will be entered twice (first semester and second semester), and a ½ credit class will be entered once. If your transcript does not fall into one of the above categories, please contact the Office of Admissions at [admissions@admin.fsu.edu](mailto:admissions@admin.fsu.edu).

### How do I report my senior classes?

Since we encourage applicants to apply early in their senior year, you should list your classes as "In Progress" if you will have no grades associated with them. If your schedule changes, you must immediately update your SSAR. To make changes, simply log in to the SSAR website with the email address and password used to create your original SSAR.

### What if I am taking classes in the summer?

You will enter the class and grade like you would any other class that you have taken during the regular school year; however, you will record the class in the preceding school year. For example, if you took a class between the 9th and 10th grades, you would enter the class as occurring in the 9th grade.

### How do I enter my grades if my school uses pluses/minus?

Pluses and minuses are not used in the admission review process and cannot be entered in the SSAR. Grades will be reported as A, B, C, D, and F. For example, grades of B+ and B- are treated as a B grade, and should be denoted in the SSAR as a B.

### How do I enter my grades if my school uses a numerical system?

Numerical grades should be converted to A-F grades based on your high school grading scale which can be found on your high school transcript or school profile (or you can speak with your high school counselor about your school's grading scale).

### How do I enter my weighted grades?

You should report all grades exactly as they are listed on your transcript. Do not add or remove any weight. You will use the Course Level field on the SSAR to indicate the type of course (e.g., honors, AP, dual enrollment, etc.).

### How do I enter my college (dual enrollment) classes and grades?

You must self-report all college (dual enrollment) classes and grades exactly as listed on your transcript, e.g., ENC 1101 (English Composition) with a grade of A. These classes should only be reported in the semester that the classes were taken.

### Do I report all of the classes taken and grades earned that are reflected on my transcript?

The SSAR entry process is organized by academic areas (English, Mathematics, Natural Science, Social Science/History, and World Language). There is also an "Other" category for you to enter all AICE, AP, IB, and dual enrollment classes and their corresponding grades that are not associated with the 5 academic subject areas. We only want you to report all classes taken and grades earned in these areas. If you have classes in other areas, e.g., band or P.E., you will not list these classes in SSAR.

### What if I repeated or withdrew from one or more of my classes, or I took a course for Pass/Fail?

If you repeated or withdrew from a class in one of the six subject areas listed on the SSAR, you must list all attempts on your SSAR. The same is true for classes in which you earned a grade of Pass or Fail. Your SSAR must match what is on your high school transcript.

### Does it matter if I attended more than one high school and/or college during my academic career?

No. When completing the SSAR you should list all of the appropriate classes regardless of how many different schools you attended. If you have attended multiple schools and the classes and grades are not reflected on your current high school transcript, you should obtain a copy of those transcript(s) from your previous schools or from the guidance office.

### What if I can't find my high school listed on the SSAR website?

The SSAR website uses a database of "official" high school names from College Board which may vary slightly from the everyday name of your school. When you are searching for your school, try to use variants of the official school name. For example, if you attend T.C. Central High School, enter "Central" in the search box. Make sure you select the correct state. If you still can't find your high school, you should contact the Office of Admissions at [admissions@admin.fsu.edu](mailto:admissions@admin.fsu.edu).

### Can I change the SSAR once it is completed and I receive my SSAR ID Number?

Yes. We want your SSAR to be as accurate as possible. If you have corrections or your schedule changes, we encourage you to update your SSAR. To make changes, simply log in to the SSAR website with the email address and password used to create your original SSAR.

### Do I have to submit my first semester grades in the senior year?

The following students will be required to submit first semester (mid-year) grades in the senior year: all students who were admitted or deferred in our December notification and all applicants who will receive a decision in March. You will simply log in to the SSAR website with the email address and password used to create your original SSAR and enter your first semester (mid-year) grades.

### What if I am unsure about the dual enrollment classes that I will be taking during the second semester of my senior year?

You should provide the best estimation of what classes you will be taking when completing the SSAR. If your schedule changes, you will be able to update the SSAR. If you are unable to re-enter the SSAR, you should be in contact with the Office of Admissions at [admissions@admin.fsu.edu](mailto:admissions@admin.fsu.edu). If the correct information is not listed on your SSAR when we validate your classes and grades from your official

high school and college transcripts, your admission is subject to revocation and, if discovered after classes begin, cancellation of registration.

### Can my SSAR be used by multiple colleges/universities?

Currently, only Florida State University and the University of Florida are utilizing the SSAR. Once you complete your SSAR, you must check with each institution on how to give them access to your data. For Florida State, you go to Part II of your application and provide us with your SSAR ID Number.

### When do I send my official high school and college (if dual enrolled) transcripts?

Only applicants offered admission who plan to enroll at Florida State are required to submit official high school and college transcripts after graduation. These transcripts will be used to validate the information on the SSAR. Students with inaccurate data on the SSAR may be denied admission to the University, have their admission revoked if admitted, or have their registration cancelled if enrolled.

## ACT/SAT INFORMATION

- Applicants should take both exams, since FSU uses the best composite/total score for admission and scholarship purposes. (Applicants taking the ACT must also submit the ACT Combined English/Writing Test.)
- Applicants should take each exam more than once, since FSU 'superscores' (takes the highest subscores to create the ACT composite and SAT total).
- In addition to the applicants' overall composite on the ACT or total score on the SAT, the following minimum subscores are required for admission:  
**Writing:** 21 on the ACT English and Combined English/Writing or 500 on the SAT writing, and  
**Math:** 21 on the ACT math or 500 on the SAT math, and  
**Reading:** 22 on the ACT reading or 500 on the SAT critical reading.  
These scores do not guarantee admission; in fact, most students admitted to FSU have higher subscores. Students being considered for special programs (CARE, Dance, Music, Theatre, and Athletics) may have these minimum subscores waived.
- The January SAT and February ACT are the latest tests that we will use in the admission cycle.

## DUAL ENROLLMENT

If your students have earned dual enrollment credit while in high school, they must have their official college transcript(s) sent to FSU immediately upon completion of the coursework. **If your student's cumulative college GPA is below 2.0, admission to the University will not be granted. In the case where a final transcript is received after the offer of admission has been extended, the offer of admission will be rescinded regardless of the number of college courses taken.**

## SPRING OFFER OF ADMISSION

We will continue to offer spring admission to a number of qualified students who applied for either the summer or fall term. They will be admitted subject to successful completion of the senior year and any college coursework (courses completed through dual enrollment and/or after high school graduation).

## ACADEMIC PROGRAM GUIDE

[academic-guide.fsu.edu](http://academic-guide.fsu.edu)

To learn more about our degree programs, refer to the Undergraduate Academic Program Guide website. Your students will be provided a detailed program description, an eight-semester plan for graduation (the student's academic map), and a link to the degree program website. Students with dual enrollment, AP, IB, or AICE credit should be encouraged to review this website for information on required coursework for their intended major. **Students earning the AA degree while still in high school should also be in contact with their academic programs for additional requirements. Entering the University with the credit hours of a college junior can have negative consequences for students who are not prepared to enter the major directly from high school.**

## NURSING APPLICANTS

The College of Nursing is no longer formally accepting freshmen into their program. All students interested in pursuing a nursing degree will be considered for admission as they approach their junior year of college.

## STUDIO ART

Students majoring in Studio Art must complete a focus area, ranging from traditional media (drawing, painting, photography, etc.) to new media (interactive, time-based, digital forms, and text + media). We have expanded our digital media focus areas to incorporate classes on digital fabrication, mechatronic art, typography, virtual environments, print and media, animation, and so much more. Students seeking a graphic design degree will find that this art + design approach is much more forward thinking relative to the market. We are excited about bringing art and design students into the 21st century world of art-making. More information about Studio Art can be found at [art.fsu.edu](http://art.fsu.edu).

## PRESIDENTIAL SCHOLARS

The Presidential Scholars Program is the premier undergraduate merit scholarship program at Florida State University. The highly competitive program invests in students with extraordinary potential to be the transformational leaders of their generation. Students selected to be Presidential Scholars will receive the \$2,400 University Freshman Scholarship, along with an additional \$2,400 for a total of \$4,800 per year for four years. Out-of-state applicants will also receive a full out-of-state tuition waiver. An additional \$12,000 will be granted for educational enrichment opportunities which can be used for international experiences, such as studying abroad and Global Scholars, research and creative projects, service learning projects, or public service, internships, and entrepreneurial development. To learn more, go to [presidentialscholars.fsu.edu](http://presidentialscholars.fsu.edu).

## 2014-2015 UNDERGRADUATE COSTS

Estimated costs cover two semesters (15 hours per semester).

	FLORIDA RESIDENTS	NON-FLORIDA RESIDENTS
Tuition / Fees	\$ 6,512	\$21,678
On-Campus Housing	6,160	6,160
Food (Meal Plan)	4,048	4,048
Books / Supplies	1,000	1,000
<b>SUBTOTAL</b>	<b>\$17,720</b>	<b>\$32,886</b>
Health Insurance*	1,828	1,828
<b>TOTAL</b>	<b>\$19,548</b>	<b>\$34,714</b>

\*FSU has a mandatory health insurance policy for new students admitted to the University. The cost represents the annual individual premium for domestic students. (The premium for international students is \$2,009.) Costs of meeting this requirement will be included in financial aid considerations. Students who currently have health insurance may show proof of comparable coverage and may not be required to purchase the University policy. Refer to [healthcenter.fsu.edu/insurance](http://healthcenter.fsu.edu/insurance) for additional information.

## PREVIEW

Accepted students and their families will be invited to Preview, a series of special visitation days, designed to answer all of their questions and make them feel comfortable with our entire campus community. Preview dates for the upcoming year are February 20, February 27, March 20, March 27, and April 3.

# Meet Our Admissions Staff

# For Additional Information

Area code is (850) unless otherwise indicated.



Janice Finney  
Director  
850.644.1328  
jfinney@admin.fsu.edu



Hege Ferguson  
Senior Associate Director  
850.644.1389  
hferguson@admin.fsu.edu



Donna Bostwick  
Associate Director  
850.644.1226  
dbostwick@admin.fsu.edu



Julie Richardson  
Associate Director  
850.644.1270  
jmrichardson2@fsu.edu



Mark Meloney  
Assistant Director  
850.644.1232  
mmeloney@admin.fsu.edu



Amy Noyes  
Assistant Director  
850.645.0342  
anoyes@fsu.edu



Cody Furse  
Senior Admission Officer  
850.644.1238  
cfurse@fsu.edu



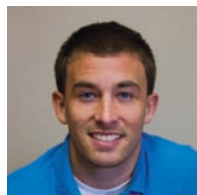
Lisa Hauser  
Senior Admission Officer  
850.644.7146  
lhauser@fsu.edu



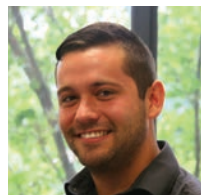
Alexandra Holdnak  
Senior Admission Officer  
850.644.0313  
aholdnak@fsu.edu



Lisa McGrady  
Senior Admission Officer  
850.644.1278  
lmcgrady@admin.fsu.edu



Michael Alberto  
850.644.8861  
malberto@admin.fsu.edu



Matthew Cermak  
850.644.8912  
mcermak@fsu.edu



Olivia Chason  
850.644.0047  
ochason@fsu.edu



Jenna Hill  
850.644.8954  
jhil2@fsu.edu



Ebony Lovett  
850.645.9619  
elovett@fsu.edu



Stephanie Ramos  
850.644.1236  
sramos@fsu.edu



FLORIDA STATE  
UNIVERSITY

## COLLEGES

Arts and Sciences.....	644.1081
<a href="http://artsandsciences.fsu.edu">artsandsciences.fsu.edu</a>	
Business.....	644.3892
<a href="http://cob.fsu.edu">cob.fsu.edu</a>	
Communication and Information.....	644.9698
<a href="http://cci.fsu.edu">cci.fsu.edu</a>	
Criminology and Criminal Justice.....	644.4050
<a href="http://criminology.fsu.edu">criminology.fsu.edu</a>	
Education.....	644.3760
<a href="http://coe.fsu.edu">coe.fsu.edu</a>	
Engineering.....	410.6358
<a href="http://eng.fsu.edu">eng.fsu.edu</a>	
Human Sciences.....	644.5279
<a href="http://chs.fsu.edu">chs.fsu.edu</a>	
Law.....	644.3787
<a href="http://law.fsu.edu">law.fsu.edu</a>	
Medicine.....	644.1855
<a href="http://med.fsu.edu">med.fsu.edu</a>	
Motion Picture Arts.....	644.7728
<a href="http://film.fsu.edu">film.fsu.edu</a>	
Music.....	644.3424
<a href="http://music.fsu.edu">music.fsu.edu</a>	
Nursing.....	644.3296
<a href="http://nursing.fsu.edu">nursing.fsu.edu</a>	
Social Sciences and Public Policy.....	644.5470
<a href="http://coss.fsu.edu">coss.fsu.edu</a>	
Social Work.....	644.5713
<a href="http://csw.fsu.edu">csw.fsu.edu</a>	
Visual Arts, Theatre, and Dance.....	644.5244
<a href="http://cvatd.fsu.edu">cvatd.fsu.edu</a>	

## UNIVERSITY OFFICES

Admissions.....	644.6200
<a href="http://admissions.fsu.edu">admissions.fsu.edu</a>	
Athletics.....	644.1079
<a href="http://fsu.edu/athletics">fsu.edu/athletics</a>	
Band (Marching Chiefs).....	644.3507
<a href="http://fsuchiefs.com">fsuchiefs.com</a>	
CARE.....	644.9699
<a href="http://care.fsu.edu">care.fsu.edu</a>	
Career Center.....	644.6431
<a href="http://career.fsu.edu">career.fsu.edu</a>	
Financial Aid.....	644.0539
<a href="http://financialaid.fsu.edu">financialaid.fsu.edu</a>	
Housing.....	644.2860
<a href="http://housing.fsu.edu">housing.fsu.edu</a>	
International Programs.....	800.374.8581
<a href="http://international.fsu.edu">international.fsu.edu</a>	
New Students and Family Programs (Orientation).....	644.2785
<a href="http://nsfp.fsu.edu">nsfp.fsu.edu</a>	
Seminole Dining.....	644.3663
<a href="http://seminoledining.com">seminoledining.com</a>	
Student Disability Resource Center.....	644.9566
TDD.....	644.8504
<a href="http://disabilitycenter.fsu.edu">disabilitycenter.fsu.edu</a>	
University Health Services.....	644.6230
<a href="http://uhs.fsu.edu">uhs.fsu.edu</a>	
University Honors Program.....	644.1841
<a href="http://honors.fsu.edu">honors.fsu.edu</a>	
Visitor Services (Campus Tours).....	644.6200
<a href="http://visit.fsu.edu">visit.fsu.edu</a>	

This document is available upon request in alternative format for individuals with print-related disabilities.